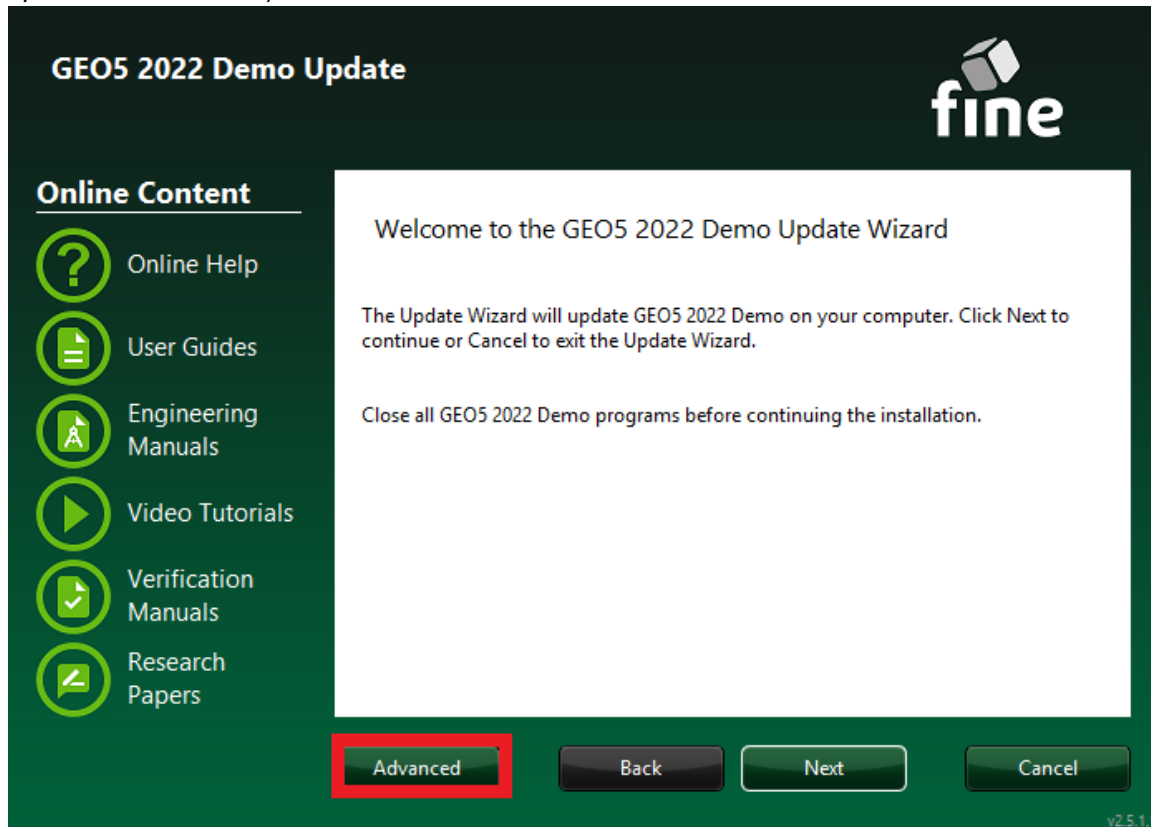


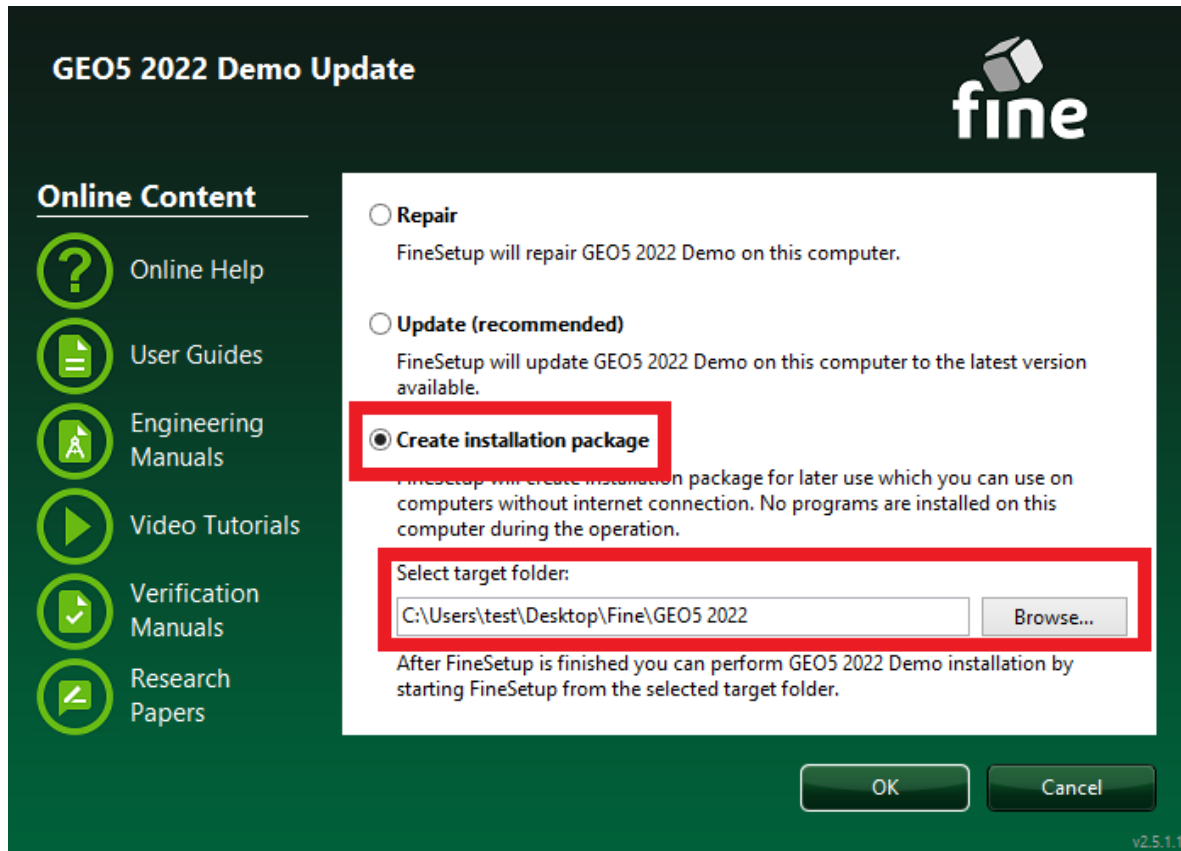
How can I create an offline installation?

You can create an offline installation package yourself, e.g. for later use or for use on computers without internet connection:

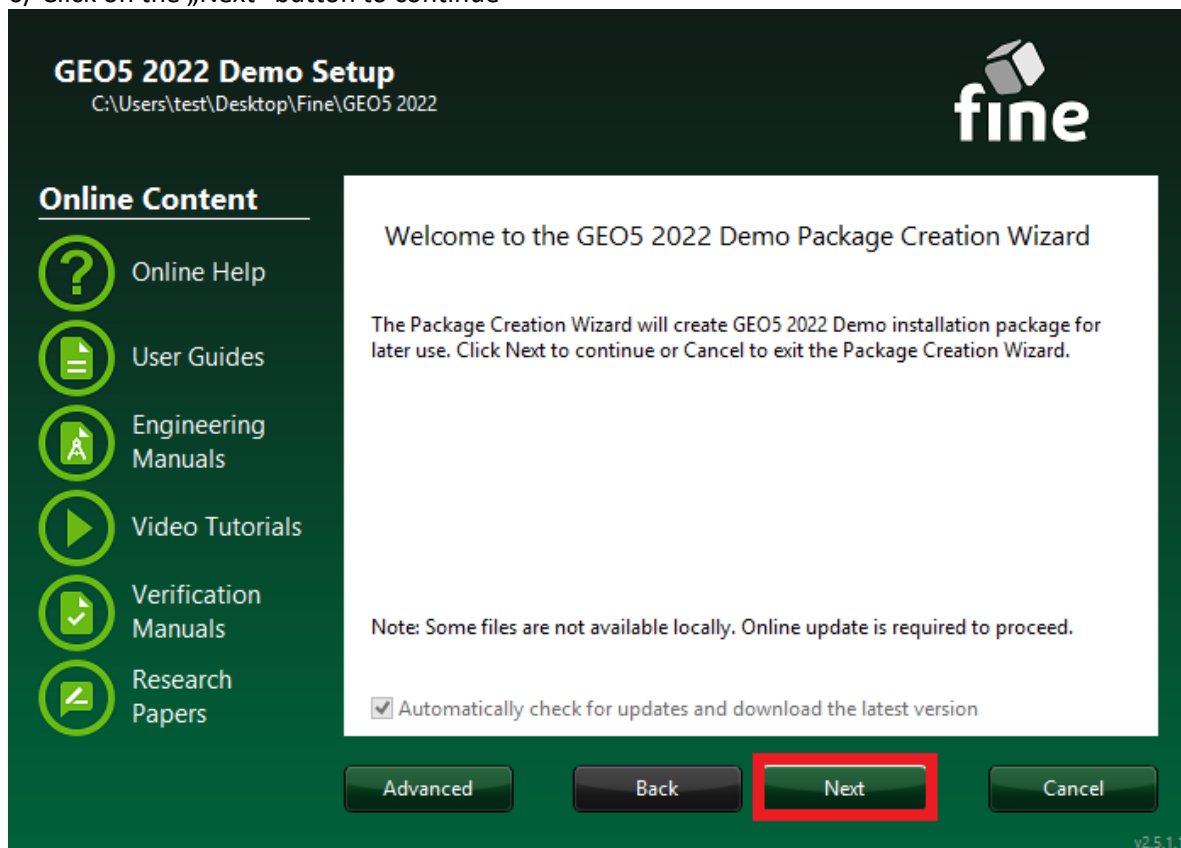
- 1/ Send request for creating offline installation to support@fine.cz
- 2/ You receive the installation file for the client (e.g. *31003_GEO564_28.fine*)
- 3/ Run the installation file **.fine*
- 4/ In the first window, click on "Advanced"



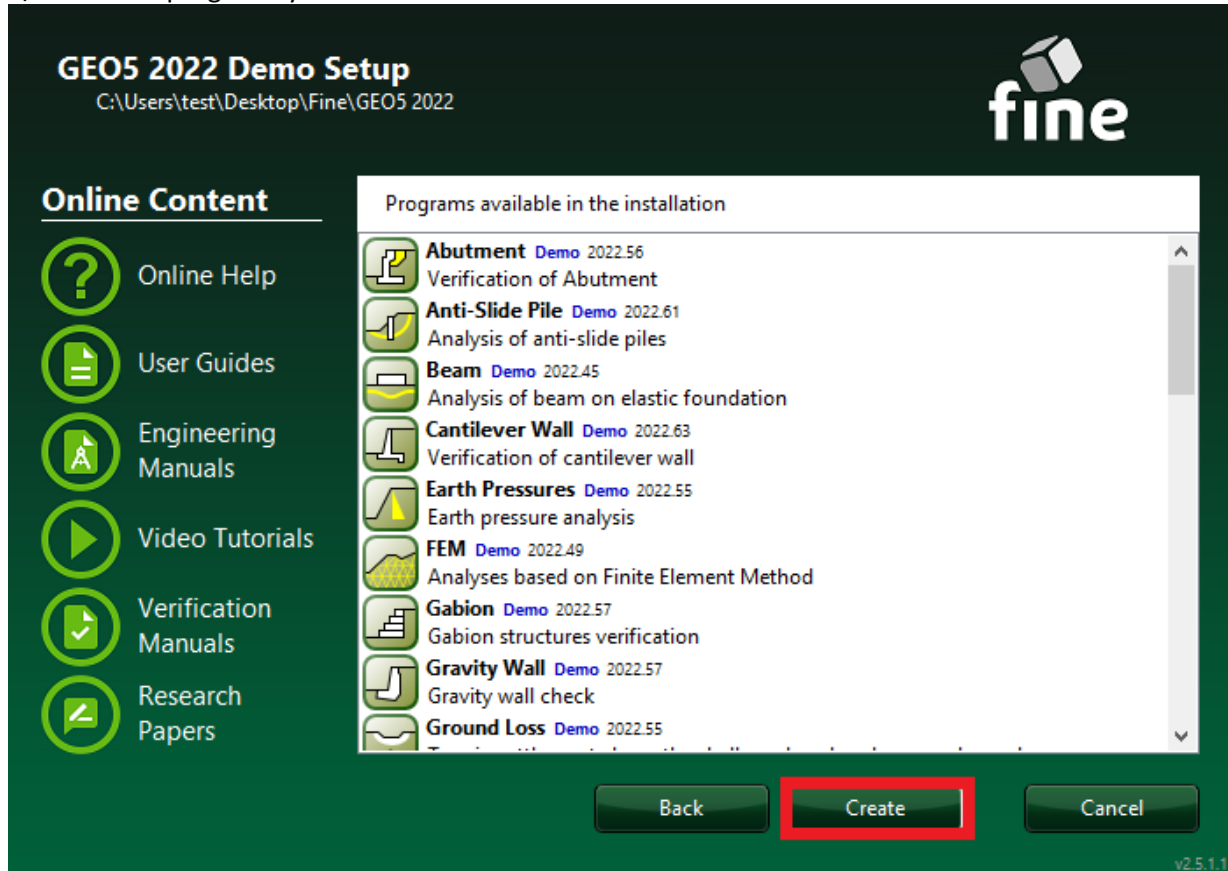
- 5/ Choose "Create an installation package" and select target folder, and press "OK" button



6/ Click on the „Next“ button to continue



7/ Select the programs you want to include in the offline installation



8/ Your offline installation package was created and located in selected target folder

